

LCExcel 2 V2.1

Operation of the LCExcel 2 V2.1 software for the LC 100, serial no. 221000 and higher



105474_en_01

© GLW 2014-06-10

1 Description

LCExcel enables Microsoft Excel files to be copied to the cutting machine LC 100.

You can create a table of data records with cutting jobs. The data records contain information on the number and length desired, as well as two lines for a description of the cutting jobs.

These data records are then processed sequentially from the LC 100.



You can save and process up to 20 projects (lists) with a maximum of 100 data records (cutting jobs) in the LC 100.

2 How to proceed

2.1 Installing LCExcel

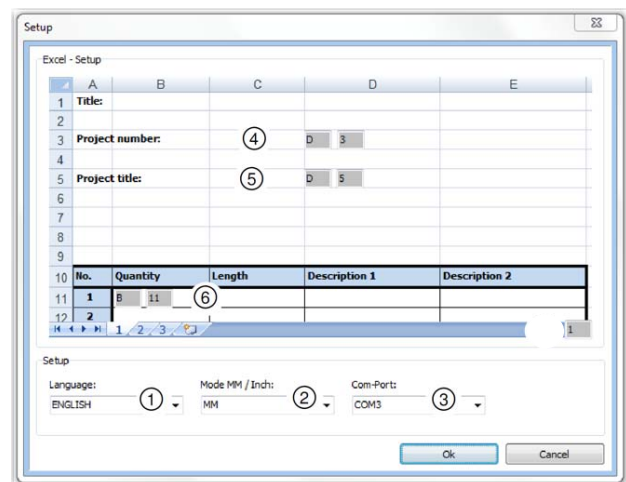
- Insert the installation CD. If the installation does not start automatically, execute the file LC 100_V2.1.exe.

2.2 Adjusting the presets

- Ensure that the **interface** (COM1, COM 2...) which the LC 100 is connected to has been set correctly. Then click on this button.



- If necessary, you can change the **language** (German/English) or the **unit of measurement** (mm/in.).



- Language selection
- Unit of measurement (mm or in.)
- Interface that the LC 100 is connected to

Here you can also change the location where the table expects the data. Usually, these do not need to be changed.

- Table location of the project number (here in column D, row 3)
- Table location of the 4-row project title (here in column D, row 5)
- Table location of the number of the first data record (here in column B, row 11)
(The length and description should be entered in the next columns to the right, in the same row.)
- Worksheet that should be sent to the LC 100

2.3 Creating cutting jobs

- Create a ready-made Microsoft Excel table by clicking on this button.



You will later be able to see the entries from the Microsoft Excel table in the display of the LC 100.

The descriptions can be edited freely and help later when selecting the cutting jobs.

No.	Quantity	Length	Description 1	Description 2
1	100	1560	0,14mm ² yellow-green	Cable Product 06745

Please observe the following for the cutting jobs:

Please observe the following restrictions for the values. You will receive an error message if invalid values are entered.

At least one data record (= cutting job) has to be created and no spaces are allowed between data records.

Project number	Number from 1 to 20
Project title	Free text, four rows with 21 characters each The first row is a required field. The other rows can be left empty.

No.	Data record number You can paste up to 100 rows (= cutting jobs) into the table.
Number	Enter how often the cable should be cut (1 to 9999)
Length	Cable length in millimeter or inch, depending on the presetting Number from 1 to 999999 (mm) Number from 1 to 99999.9 (in.)
Description	Free text, maximum of 21 characters

Possible characters include:

```

2 !"#$%&'()*+,-./:;=>?@
0 1 2 3 4 5 6 7 8 9 : ; < = > ? @
@ A B C D E F G H I J K L M N O U
P Q R S T U V W X Y Z [ \ ] ^ _ `
` a b c d e f g h i j k l m n o p
p q r s t u v w x y z { | } ~ + =

```

The data is checked before transmission and error cells in the Excel table are marked red.

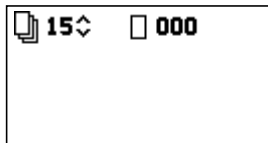
Correct the errors, save and close the Excel table. When the errors have been corrected, the red highlighting is automatically removed by the software.

2.4 Loading cutting jobs to the LC 100

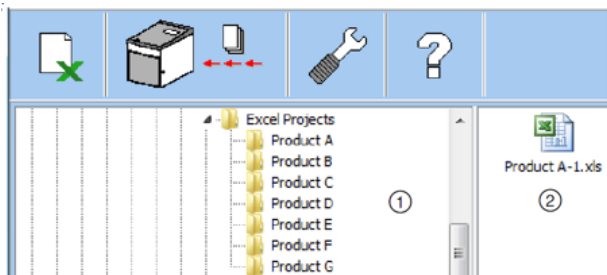


Please observe the order of workflow when up-loading.

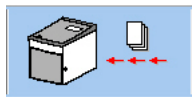
- Make sure that LC 100 and the computer are switched off.
- Connect the LC 100 to a computer using the RS-232 cable supplied.
- Switch on the LC 100.
- **Press the "mode" button and then the "2" key on the LC 100 to change to the appropriate mode.**



- Switch to the LCExcel software.

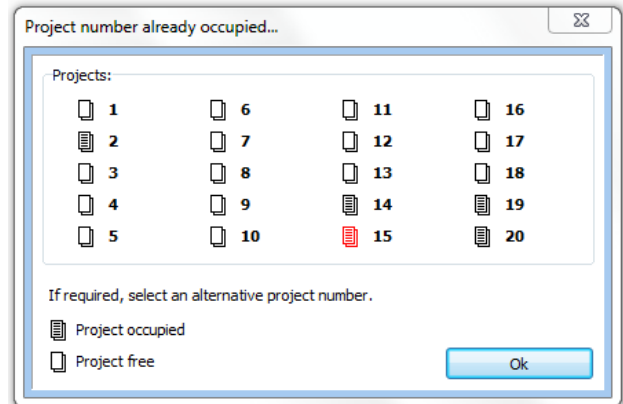


- Select the folder in the directory window ① where the Microsoft Excel file desired is located.
- Choose the desired file in the selection window ②.
- To send the file to the LC 100, click on this button.



If it is determined when sending the file that the project number is already occupied in LC 100, then a selection window appears.

If necessary select a free project number to save the Excel file under. The selected project number is shown in red.



While the project is being loaded to the LC 100, a display appears on the screen.

When it has finished loading, a display for project selection appears.

