

**Pieds HELAVIA®**  
 en caoutchouc polychloroprène noir  
 Caractéristiques techniques pages D100

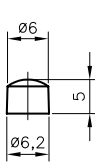


HELAVIA®

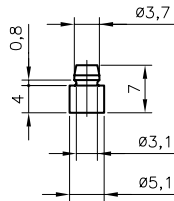


type	code article		type	code article		type	code article	
15-018	0254 0001 010	100	15-151	0254 0021 010	100	15-560	0254 0043 010	100
15-020	0254 0002 010	100	15-156	0254 0022 010	100	15-605	0254 0084 010	100
15-021	0254 0024 010	100	15-199*	0254 0032 010	100	15-615	0254 0044 010	100
15-023	0254 0003 010	100	15-307	0254 0034 010	100	15-630**	0254 0049 010	100
15-026	0254 0004 010	100	15-326	0254 0036 010	100	15-650	0254 0050 010	100
15-051	0254 0008 010	100	15-327	0254 0065 010	100	15-657	0254 0035 010	100
15-054	0254 0011 010	100	15-344	0254 0037 010	100	15-685	0254 0029 010	100
15-068	0254 0027 010	100	15-360	0254 0038 010	100	15-717	0254 0066 010	100
15-089	0254 0012 010	100	15-385	0254 0039 010	100	15-718	0254 0067 010	100
15-092	0254 0061 010	100	15-386	0254 0040 010	100	15-753	0254 0124 010	100
15-142	0254 0013 010	100	15-388	0254 0041 010	100	15-793*	0254 0126 010	100
15-145	0254 0014 010	100	15-520	0254 0042 010	100	15-827	0254 0127 010	100
15-149	0254 0015 010	100	15-533	0254 0083 010	100			

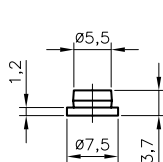
\* caoutchouc Nitrile  
 \*\* caoutchouc EPDM



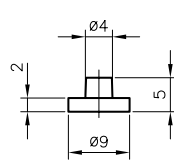
**15-021**  
0254 0024 010



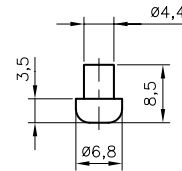
**15-199**  
0254 0032 010



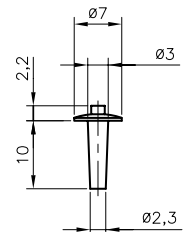
**15-657**  
0254 0035 010



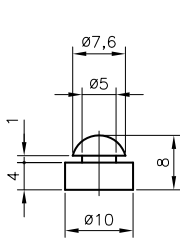
**15-560**  
0254 0043 010



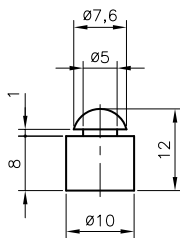
**15-388**  
0254 0041 010



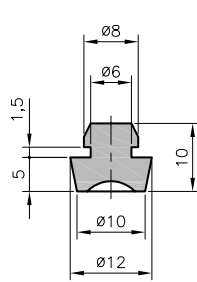
**15-793**  
0254 0126 010



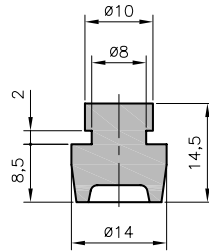
**15-386**  
0254 0040 010



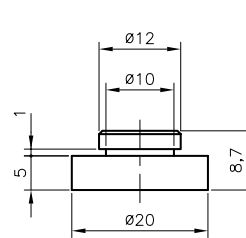
**15-385**  
0254 0039 010



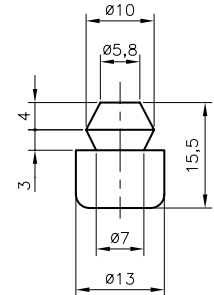
**15-018**  
0254 0001 010



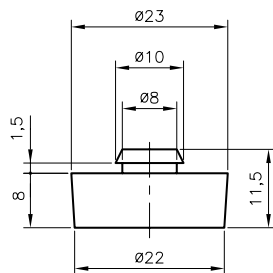
**15-142**  
0254 0013 010



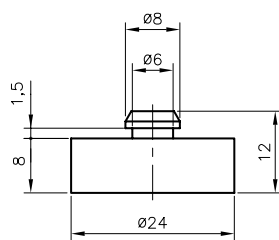
**15-520**  
0254 0042 010



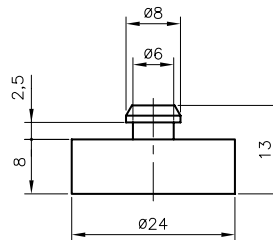
**15-615**  
0254 0044 010



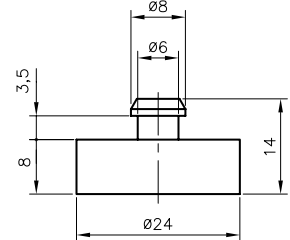
**15-344**  
0254 0037 010



**15-717**  
0254 0066 010



**15-718**  
0254 0067 010



**15-685**  
0254 0029 010

