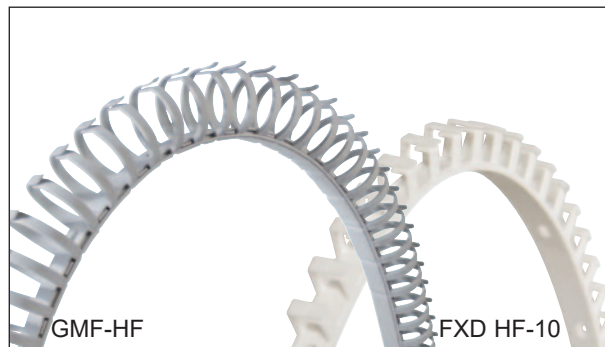


GMF - FXD

Material:	polypropylene, quality flame resistant
Color:	light grey RAL 7035
Operating temperatures:	-40 to +70°C (fixing with screw) -40 to +60°C (fixing with adhesive tape)
Specification:	V2 UL94 halogen-free

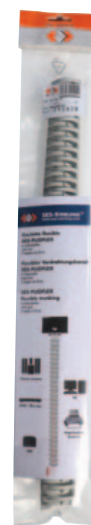
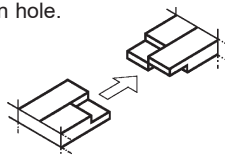
Application: PLIOFLEX is a flexible cable trunking system for use in control panels, distribution boards, or in difficult to reach areas.



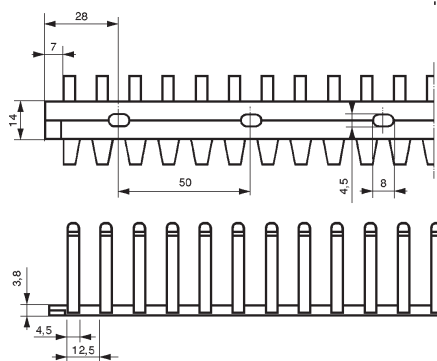
type	artide number	boxes pce	type	artide number	packs pce	H mm	L mm	D mm
without adhesive tape (in lengths of 50 cm)								
FXD HF-10	0588 0010 001	100				13,5	11	-
GMF HF-20	0847 0020 013	60	GMF HF-20 SB	0847 0025 013	2	24	23	19
GMF HF-30	0847 0030 013	36	GMF HF-30 SB	0847 0035 013	2	35	33	28
GMF HF-40	0847 0040 013	24				46	44	37
with adhesive tape (in lengths of 50 cm)								
GMF HF-20T	0847 0120 013	60	GMF HF-20T SB	0847 0125 013	2	24	23	19
GMF HF-30T	0847 0130 013	36	GMF HF-30T SB	0847 0135 013	2	35	33	28
GMF HF-40T	0847 0140 013	24				46	44	37

 Bag available with a European suspension hole.

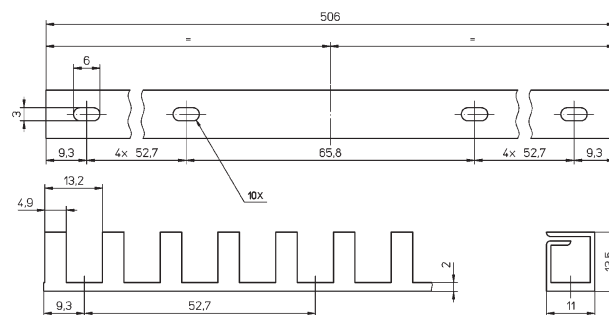
Two or several lengths can be joined by snapping the ends together.



Bag with 2 pces



Round form: GMF



Square form: FXD

- Application:**
- Attach the cable trunking - webs turned upwards, connect one cable end and laterally insert the cable up to the requested branch point, connect the opposite cable end.
 - We recommend the PLIOZIP 20/25 tool (see page A5/3-02) for the inserting of cables.
 - We also recommend SES-marker rings for the identification of your cables.

- Attachment:**
- With screws, using the DIN standard base punching.

Recommended screws:

GMF - M4 with cheese head DIN 84 A and washer or M4 with cheese head DIN 85 A and washer;
FXD - M3 with cheese head DIN 85 A and washer or M3 with cheese head DIN 85 A and washer.

- By the adhesive on the T type using a smooth, dry, clean and degreased surface (do not touch the adhesive). The assembly temperature must be above 10°C.

